

MIA-L4WR



APPLICATIONS

- VIP Rooms
- Bar & Lounges
- Live Music Venues

SPECIFICATIONS

Performance

Frequency Range (+/-3dB) 100 Hz – 20 kHz

Horizontal Coverage (-6 dB) 120°

Vertical Coverage (-6 dB) 45°

Nominal Impedance 8 ohms

Power Handling RMS 120W

Sensitivity 1W @ 1m 94 dB SPL

Maximum Peak SPL at 1m 118 dB Peak

Recommended Amplifier EP-60004

Recommended Processor BSS & Q-Sys

Connectors

Audio Input Connector 1 x Neutrik NL4

Audio Output Connector 1 x Neutrik NL4

Enclosure

Enclosure Construction Premium Birch Plywood

Enclosure Geometry Column

Color Black, White

Finish ISO-flex Paint

Dimensions (H x W x D) (23" x 4.9" x 6.7")

Net Weight 17.6 lbs. (8 kg)

DESCRIPTION

A unique high powered column speaker where aesthetics is extremely important to designers and architects. Slim and sleek look with hidden small rear vertical bracket. Two L4 connected top, and bottom delivers 8 high output compression drivers. Loudspeaker must be accompanied by GIA210S or GIA310S subwoofer using BSS or Q-SYS signal processing. Weatherized Version

KEY FEATURES

- 2-WAY Passive Point Source
- Ultra-Compact passive two-way system
- High Power Column Speaker
- Weatherized Version

E11EVEN

SOUND

Components

L/F Driver MIAL4-4WOOFER

H/F Driver MIAL4-4DIA

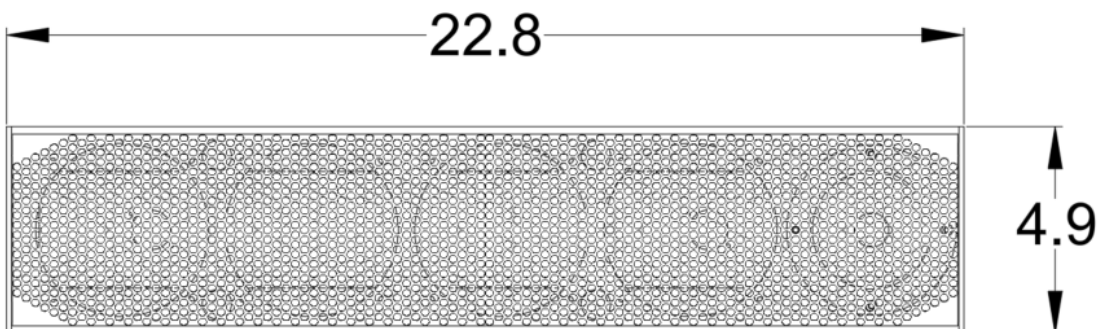
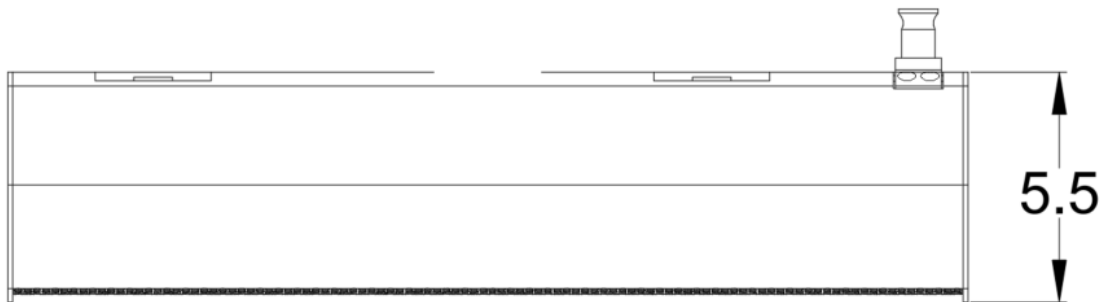
Shipping

Shipping Weight 19.8 lbs. (9 kg)

Accessories

MIAL4-VMBRK Vertical Bracket

DIMENSIONS



E11EVEN

SOUND

E11EVEN Sound Aesthetically is always being improved, along with fly points and mounting hardware. Grills and other cosmetic features subject to change, rendering or photo is for reference purposes only.