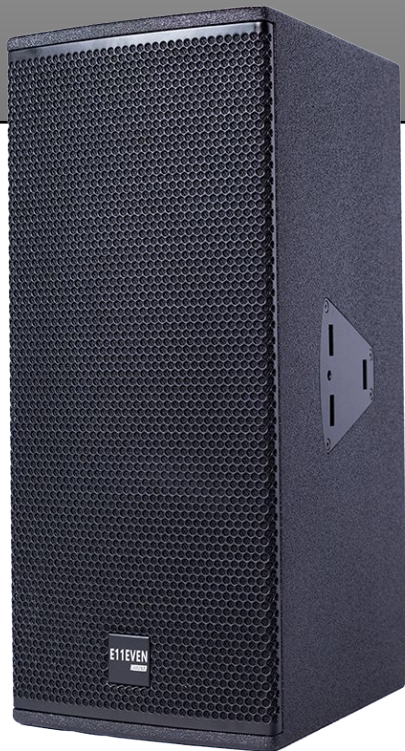


MIA-8.2



APPLICATIONS

- Nightclubs
- VIP Rooms
- Bar & Lounges
- Live Music Venues

SPECIFICATIONS

Performance

Frequency Range (+/-3dB) 90 Hz – 20 kHz

Horizontal Coverage (-6 dB) 110°

Vertical Coverage (-6 dB) 40°

Nominal Impedance 8 ohms

Power Handling RMS 500W

Sensitivity 1W @ 1m 99 dB SPL

Maximum Peak SPL at 1m 131 to 136 dB Peak

Recommended Amplifier EP-13004

Recommended Processor BSS & Q-Sys

Connectors

Audio Input Connector 1 x Neutrik NL4

Audio Output Connector 1 x Neutrik NL4

Enclosure

Enclosure Construction Premium Birch Plywood

Enclosure Geometry Trapezoidal

Color Black, White or RAL

Finish ISO-flex Paint

Dimensions (H x W x D) (22.8" x 10" x 13.4")

Net Weight 40 lbs. (18 kg)

DESCRIPTION

A two 8" drivers in a dipole arrangement with a 1.4" compression driver mounted onto a rotatable constant directivity (CD) horn. MIA8.2 is designed to offer flexible and highly configurable systems for use in even the most challenging sound reinforcement applications. The MIA8.2 loudspeakers can be used for small- to medium-scale sound systems. Recommended to be paired with GIA310S

KEY FEATURES

- 2-WAY Passive Point Source
- 1" compression driver with polymer diaphragm
- Threaded fixing points for wall mounts

E11EVEN

SOUND

Components

L/F Driver MIA8.2-8DR

H/F Driver MIA8.2-H/FDR

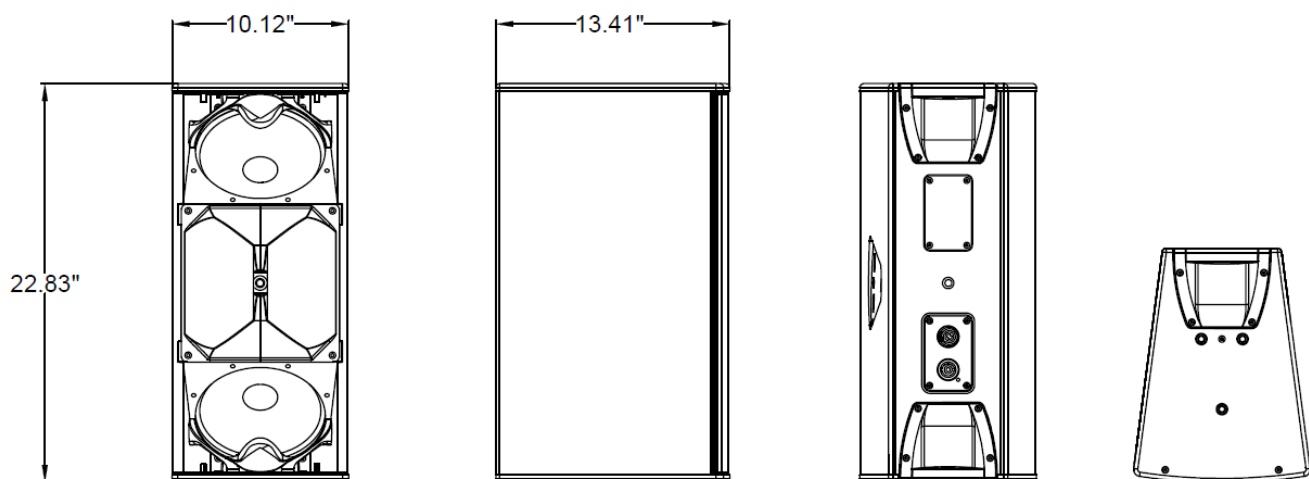
Shipping

Shipping Weight 43 lbs. (19.5 kg)

Accessories

Eyebolts

DIMENSIONS



E11EVEN

SOUND

E11EVEN Sound Aesthetically is always being improved, along with fly points and mounting hardware. Grills and other cosmetic features subject to change, rendering or photo is for reference purposes only.